



[www.girbau.com](http://www.girbau.com)

**GIRBAU**

LAUNDRY EQUIPMENT

## 6 series HS WASHER EXTRACTORS

HS-6008  
HS-6013  
HS-6017

Discover the difference of a new dimension



GREENING your laundry

HS 6 SERIES, THE FORCE OF EXPERIENCE,  
THE CHALLENGE OF INNOVATION

# HS 6 series



The 6 Series proves that, as the culmination of over 50 years of experience, innovation always gives positive results. In addition to the renowned prestige and strength of the Girbau washer extractors, the 6 Series introduces the latest technological advances and limitless features that allow each user to find the solution that is right for them.



## Free Standing MDS



### HIGH SPEED SPIN CYCLE WITHOUT NOISE OR VIBRATIONS

The HS 6 series is Free-Standing and does not require any type of bolting down, allowing fast and easy installation.

The MDS (Multi Directional Springs) system allows spin cycle speeds greater than 350G for silent and very stable operation. It absorbs up to 95% of the vibrations and it lengthens the life of the shock absorbers considerably in comparison to other systems.

### HIGHLY ROBUST CONSTRUCTION

All the metal parts that come into contact with the linen are stainless steel.

The exclusive GIRBAU sealing system is highly efficient. It is based on a **double radial and axial Viton seal**, with a large drainage chamber in between, to quickly detect water entering the bearing box. In addition, the watertight closing of the loading door is ensured with an EPDM seal.

## GDRIVE

The electronic *GDRIVE* system allows optimal treatment for each type of fabric. The inverter technology in communication with the washing machine's microprocessor allows:

- Multiple rotation speeds with a single motor
- Optimal management of the spin cycle and positioning
- Important energy savings
- Integrated out of balance control
- Reduction in noise, vibration and component fatigue



### SAVE TIME AND MONEY ON MAINTENANCE

The 6 Series washers require little maintenance, and this is easily carried out as a result of all the transmission and electronic components being highly accessible, thereby reducing the costs. At the same time, many of the components of the 6 Series washers are interchangeable, making it easier to manage your stock of spare parts.



### ERGONOMIC DESIGN

The strictest ergonomic criteria have been considered throughout the design process. The large door allows for extremely easy loading and unloading.

Different options of materials are available for the external cabinet.



### THE STRENGTH AND DELICACY OF A QUALITY DRUM

You only have to open the door of any Girbau washing machine to realise that although it may have been in service for many years, the drum remains in perfect condition.

Together with the excellent treatment that the clothes receive, the prestige that Girbau drums enjoy is guaranteed by build characteristics (welding-free) that give it great strength and durability.

**Aquafall**



**WATER CONSUMPTION**

6 series is fitted with the Aquafall system: holes in the drum blades allow additional water to enter like a waterfall, increasing washing action and reducing rinse cycle time and working water levels.

**AQUAMIXER**



**ENERGY CONSUMPTION**

To improve the washing action even further, HS 6 Series machines incorporate the **AQUAMIXER** system, a hot and cold water mixer that allows the obtaining of very precise bath temperatures or as a supplement to the heating, thus saving energy and process times.

## CONTROL INTELI, A NEW MICRO-PROCESSOR FULL OF POSSIBILITIES

Optimum dosing to give every fabric the treatment it deserves.

To guarantee the best washing process and treatment suitable for every fabric, the 6 Series washers with INTELI control allow up to 12 external dosings. In the Coin and Logi controls up to 4 external dosings can be connected.

Chemical products do not come into direct contact with the laundry but are previously diluted in the collector.



### WET CLEANING READY

Controlling all the parameters of the machine allows the most demanding of washes, such as wet cleaning, to be performed easily and efficiently.

### DOSINGS AND COLLECTOR

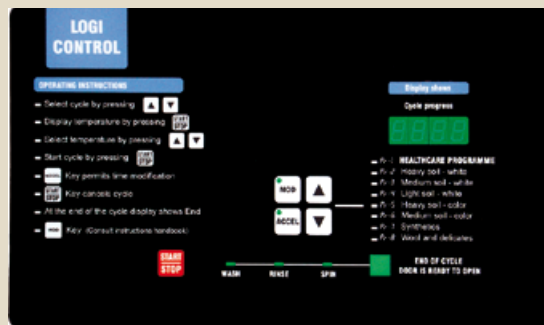
The 6 series incorporates a new dosing design with four compartments (two for powder and two for liquid products).

The water inlets and dosings are concentrated in a collector that is also used for steam exhaust. Chemical products do not come into direct contact with the laundry but are previously diluted in the collector.



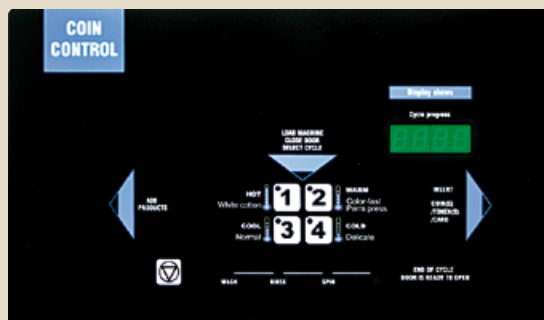
## COMPLETELY MODIFIABLE CONTROLS. A PROGRAM FOR EACH USER

The HS 6 series is available with three control versions that allow you to respond to any washing need.



### LOGI : HS-6008 · HS-6013 · HS-6017

Suitable for commercial laundries. It has 8 individually and phase-to-phase modifiable programs (up to 9 phases per program). The LOGI control allows the user to modify the programs in an individualised way, providing many more possibilities for adapting the machine action according to the type of fabric to be treated. The clock option allows the user to program the desired start time. It has a crease-guard mode, selectable gradual cool-down and failure check and message alarm system.



### COIN: HS-6008 · HS-6013 · HS-6017

Suitable for coin-op establishments. It has 4 individually and phase-to-phase modifiable programs (up to 6 phases per program). Pay system with coins or tokens. Failure check and alarm messages system. The clock option allows the user to program prices according to the time of day and program. Light indicators guide the user step by step until the washing machine starts.

## ADVANCED GRAPHIC CONTROLS FOR HIGH PRECISION WASHING



### INTELI : HS-6013 · HS-6017

The INTELI control allows infinite programming possibilities (20 standard programs and 79 free). So, it is the ideal control for professional processes, including WET CLEANING, Goretex, etc. This control allows you to program each and every parameter quickly and easily.

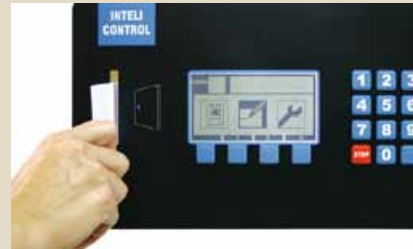
The INTELI control allows you to save programs on a memory card and copy them onto other washing machines.

To facilitate its use, this control views, the programming and executing processes through easily interpretable, informative icons, which appear on a LCD screen.

The graphic mode makes it very easy to understand the programming.

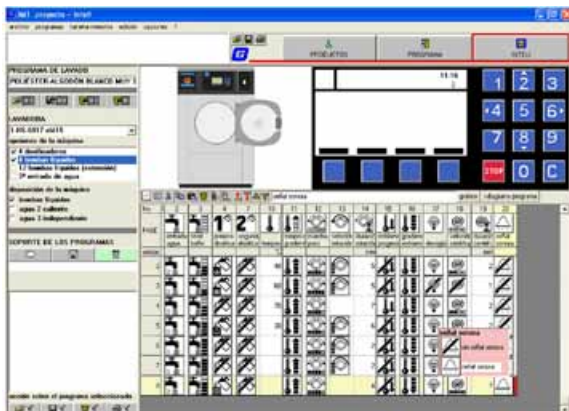


The Intel screen indicates the operations being performed by the machine in each washing phase



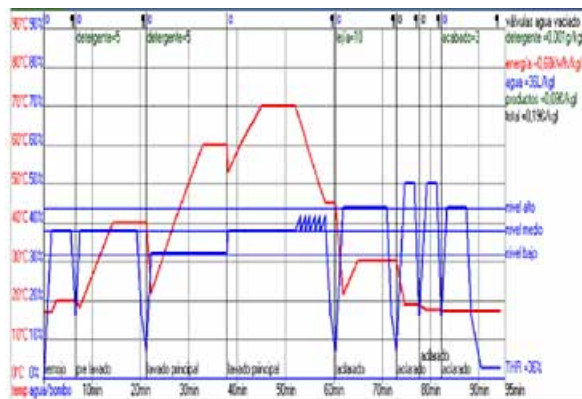
## INTELI MANAGER TOOL EXPERT (IMTx)

A perfect tool for the professional



The Intel Manager Tool Expert (IMTx) software allows the programming of each machine to be managed quickly and intuitively.

An excellent tool that provides savings and that allows all programs to be modified with precision in order to optimise each load's washing cycle.



IMTx displays the consumption graphs in order to optimise the laundry's performance



Washing programs creation software



Intel operation training program

## COMMITTED TO YOUR SAFETY

Above and beyond obligations and regulations, Girbau has always given the highest priority to the safety of its users.



### DOOR SAFETY SYSTEMS

#### TWIN LOCK

Since 1982, Girbau washing machines have been fitted with a double safety system. Two safety micro-switches connected in series (one for door closing and the other for door locking), prevent the machine from starting up accidentally.

#### AUTOCHECK

Since 1990, electronic monitoring has been used to check the dual status (open/ closed) of the safety switches in each washing cycle, and only allows a new cycle to start if a reading has been produced, thereby making it impossible to circumvent the safety system. In addition, with this system the user is able to detect faulty micro-switches, and the following cycle cannot be initiated until the switch has been changed.

## OPTIMAL FEATURES FOR MAXIMISING PRODUCTIVITY AND PROFITABILITY

Girbau has incorporated technological advances to the HS 6 series washing machine that improve its features.



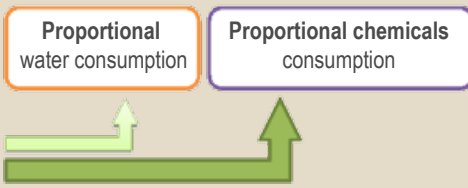
HS-6008 washer provided with support for SLI-9U tumbler dryer



	HS-6008	HS-6013	HS-6017
Controls available	Logi / Coin	Logi / Coin / Inteli	Logi / Coin / Inteli
Dosing options	Top / Front	Top	Top
Internal dosing	4	4	4
External dosing	Logi / Coin	Option 4	4 Std.
	Inteli	-	4 Std. + 8 Opt.
Drain	Gravity N.O./ Gravity N.O.	Gravity N.O.	Gravity N.O.
	Pump	-	-
Double drain option	-	Kit	Kit

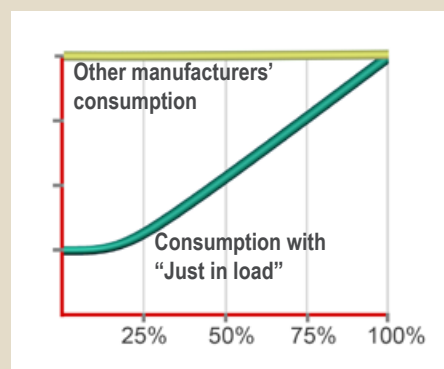
## JUST inLOAD

- CHEMICALS
- WATER CONSUMPTION
- ENERGY CONSUMPTION



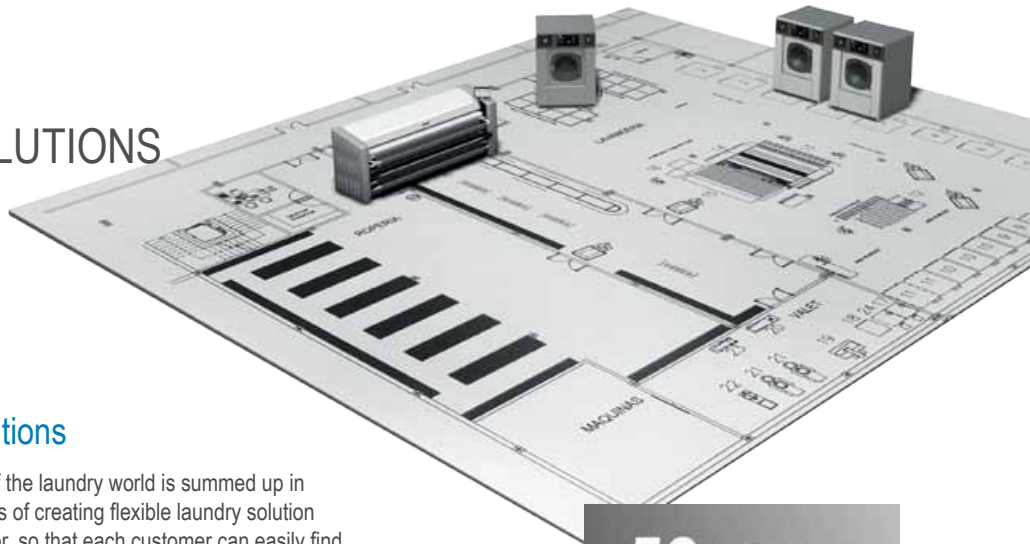
“Applicable to Inteli”

6 Series with Inteli control adds **JUST IN LOAD** function. It allows the proportional water consumption and dosing time to be calculated according to the selected program and the weight of the load.



# E&B

EASY & BEST SOLUTIONS



## Easy and sustainable solutions

The philosophy behind Girbau's vision of the laundry world is summed up in Easy&Best Solutions (E&B), and consists of creating flexible laundry solution packages that are adapted to each sector, so that each customer can easily find the solution they are looking for in terms of products and services. E&B is the result of Girbau's 50 plus years of experience in the sector. In addition, the E&B solutions are environmentally friendly. We design efficient laundries, in tune with your business and its setting.



We look after your laundry, we look after your image



## YOUR SUCCESS DEPENDS ON MAKING THE RIGHT CHOICE



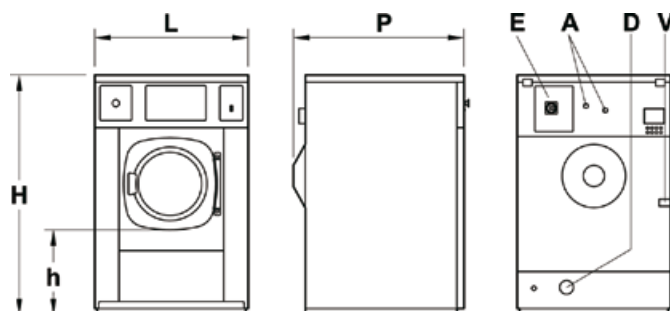
MODEL		HS-6008	HS-6013	HS-6017
Capacity	kg (1/9) * (lbs)	9 (20)	14 (31)	19 (42)
	kg (1/10) (lbs)	8 (18)	13 (29)	17 (37.5)
Drum Ø	mm (inch.)	536 (21.1)	620 (24.4)	700 (27.6)
Drum depth	mm (inch.)	351 (13.8)	416 (16.4)	450 (17.7)
Drum volume	dm <sup>3</sup> (cu.ft)	79.2 (2.8)	126 (4.4)	173 (6.1)
Net weight	kg (lbs)	124 (273)	344 (758)	476 (1049)
Crated weight	kg (lbs)	134 (295)	372 (820)	495 (1091)
Height H	mm (inch.)	1080 (42.5)	1325 (52.2)	1404 (55.3)
Width L	mm (inch.)	685 (27)	796 (31.3)	868 (34.2)
Depth P	mm (inch.)	700 (27.6)	887 (34.9)	962 (37.9)
Ø Door opening	mm (inch.)	322 (12.7)	327 (12.9)	426 (16.8)
Floor to door h	mm (inch.)	390 (15.4)	509	515 (20.3)
Washing speed LOGI, COIN	r.p.m.	50	47	44
Washing speed INTELI	r.p.m.	--	25 - 47	25 - 44
Distribution speed	r.p.m.	100	100	100
Spin speed (INTELI: can be modified)	r.p.m.	400, 600, 800, 970	400, 600, 800, 1005	351, 550, 750, 950
G-Force		283	351	354
Gravity drain Ø D	(mm) inch.	(50) 2	(75) 3	(75) 3
Pumped drain Ø D	(mm) inch.	(25) 1	--	--
Water Ø A	(mm) inch.	(19) 3/4	(19) 3/4	(19) 3/4
Steam Ø V	(mm) inch.	--	(12.7) 1/2	(12.7) 1/2
Pressure	bar	0.5 - 6	0.5 - 6	0.5 - 6
Max. motor power	kW	0.8	1	1.6
Electric heating E	kW	1ph: 2, 4, 6 3ph: 6	1ph: 6 or 8 3ph: 9 or 12	1ph: 6 or 10 3ph: 9 or 15
Voltage	H, V	120-240V 1-ph 50/60Hz	200-240V 1-ph 50/60Hz	200-240V 1-ph 50/60Hz
	E	200-240V 1 or 3-ph 50/60Hz 200-415V 3ph 50/60Hz	200-240V 1 or 3-ph 50/60Hz 380-415V 3ph 50Hz	200-240V 1 or 3-ph 50/60Hz 380-415V 3ph 50Hz
Shipping dimensions LxPxH	mm (inch.)	720x740x1212 (28.3x29.1x47.7)	823x945x1492 (32.4x37.2x58.7)	897x1017x1565 (35.3x40x61.6)

H,V : Hot water, Steam heating

E : Electric heating

\*Loading capacity calculated with a ratio 1/9 (for every 9 dm<sup>3</sup> drum volume, 1 kg linen)

GIRBAU S.A. reserves the right to change design and/or specifications without notice.



P00245 05/10



#### HEADQUARTERS

GIRBAU, S.A. Ctra de Manlleu, km. 1 - 08500 Vic (Barcelona) Spain - [www.girbau.com](http://www.girbau.com)  
tel. (+34) 93 886 2219 - Fax (+34) 93 886 0785 - [sales@girbau.es](mailto:sales@girbau.es)

#### BRANCHES

Argentina - Buenos Aires - Tel. +54-1 149017600 - [girbauargentina@girbau.com.ar](mailto:girbauargentina@girbau.com.ar)  
Brazil - Sao Paulo - Tel. +55 11-29820446 - [girbaudobrasil@girbau.com.br](mailto:girbaudobrasil@girbau.com.br)  
China - Shenzhen - Tel. +86-755-8211 1330 - [info@girbau.com.cn](mailto:info@girbau.com.cn)  
Cuba - La Habana - Tel. (+53-7) 8662071 al 73 - [girbau@girbau.co.cu](mailto:girbau@girbau.co.cu)  
France - Roissy (Paris) - Tel. +33 1-49388585 - [info@girbau.fr](mailto:info@girbau.fr)  
Germany - Hannover - Tel. +49-5119357570 - [girbau@girbau.de](mailto:girbau@girbau.de)  
India - Bangalore - Tel. +91 80 2521 5725 - [info@girbauindia.com](mailto:info@girbauindia.com)  
Italy - Venezia - Tel. +39 335 7294655 - [info@girbau.it](mailto:info@girbau.it)  
U.A.E. - Dubai - Tel. +971 4-8839951 - [girbau@emirates.net.ae](mailto:girbau@emirates.net.ae)  
U.K. - Hitchin - Tel. +44(0)-1462 427780 - [info@girbau.co.uk](mailto:info@girbau.co.uk)  
U.S.A. - Oshkosh, Wi - Tel. +1(920) 2318222 - [info@continentalgirbau.com](mailto:info@continentalgirbau.com)